



Aboriginal Family Support Services Annual Report 2015 – 2016



Table of contents

Our Vision, Mission and Guiding Principles	Page 5
Organisational chart	Page 7
The AFSS Board	Page 8
Chairperson's message	Page 9
CEO's message	Page 10
Meet the Senior Management team	Page 12
Metropolitan Services	Page 13
Regional Services	Page 21
Therapeutic Services	Page 27
Corporate Services	Page 34
Financial Statements	Page 37



Kathi Fejo, from the AFSS Foster Care team and Tony Lawrence, AFSS Gambling Program Coordinator, at the AFSS stall during the Aboriginal children's health expo, held at the Adelaide Entertainment Centre in April 2016.



Community members enjoy the lunchtime barbeque in the sun at the opening of the new AFSS Coober Pedy office.

About us

Our Vision

Together with Aboriginal communities strengthen families to ensure safe and culturally strong futures for our children and young people.

Our Mission

Aboriginal Family Support Services acknowledges the diversity of Aboriginal communities and ensures that all services are innovative, creative and healing-based.

Through strong leadership Aboriginal Family Support Services influences change in policies and service delivery in all areas of capacity building within Aboriginal families and communities.

We maintain that our Aboriginal heritage is beyond value and no child should be deprived of its richness.

Our guiding principles

Together with the community

We work together with the community to ensure our purpose is achieved in a culturally sensitive manner.

Spirituality, culture and country

We recognise the importance of our spirituality, rich cultural heritage and our strong connection to country. We ensure that we acknowledge this as an integral part of our organisation.

Leadership

We show strong leadership that challenges and influences social change for the wellbeing of our communities.

Equity

We treat all people in an ethical and professional manner.

Respect

We treat all people with respect, honour cultural sensitivity and promote an environment based on these principles.

Responsibility

We are responsible for the decisions we make and for our actions.
We are responsible to each other and to our clients.

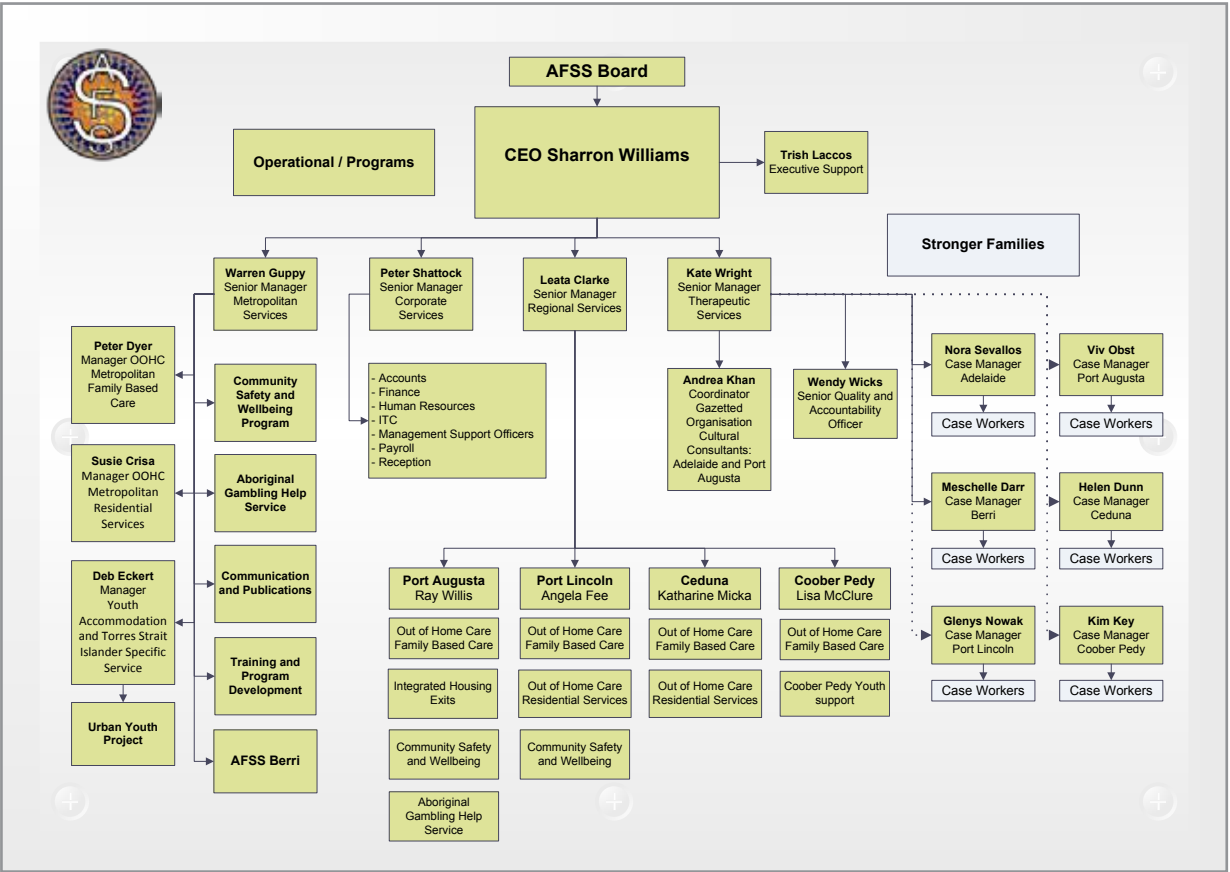
All employees are supported and valued

As an organisation, we value our staff and their contribution.



AFSS was able to engage Marra Dreaming to visit and teach children traditional painting and basket weaving methods. Some masterpieces were created during the visit, as you can see!

Organisational chart



The AFSS Board



Pictured, from left to right, are the AFSS 2015-2016 Board:

Bev Ewen, (Chairperson), Margaret Nelson (Secretary), Maryanne Clements (Executive Member), Wayne Rigney (Executive Member), Greg Sinclair (Executive Member) Sharron Williams (Public Officer).

Absent from photo is Paul Elliott (Treasurer, pictured bottom left), Barb Falla (Executive Member, pictured bottom right).



Chairperson's message

The 2015-16 year has again been one of challenges big and small and 2016-17 is looking even greater!

It's an exciting time to be part of such a great organisation. The focus on the safety and wellbeing of our children remains at the forefront of all we do. We must never lose this increasingly rewarding and challenging focus in our work. It is the reason why we exist.

During the year, our Board has been focussed on ways to increase the number of foster carers as the demand for committed people is increasing rapidly. The demand is now reaching an unprecedented level as those of you working on the ground are well aware.

One of the many highlights of the year was our visit to Coober Pedy to see the new offices and meet with the staff and other community people. What an eye-opener! We had the pleasure of seeing a "dugout" home – magnificent – just not sure I'm ready for no windows!

The community lunch was relaxed and informative. Fantastic staff and a real pleasure to meet with some of the local carers. What a great job they do! Staff from other agencies were in attendance and there was a great feel about the place.

As we move into the 2016-17 year we are recruiting heavily to get the right people for the right positions within our organisation. We face the responsibility of caring for more of our children than ever before and "near enough is good enough" will never do!

My sincere thanks goes to Sharron our Chief Executive for the untiring work she gives to our cause. Sharron represents our children on several Boards, always seeking greater awareness and focussing on improving outcomes for families and children.

Our staff have a sometimes incredibly difficult job dealing with the complex needs of the children entrusted to our care and my thanks goes to each and every one of you.

To the Senior Managers, Executive and support staff, we couldn't do it without you. You are the cog in the wheel, often going way beyond what is expected to help us achieve even greater support for our kids. Thank you.



Bev Ewen
Chairperson

CEO's message



*Sharron Williams
Chief Executive Officer*

The past 12 months have seen much activity and growth at AFSS.

The establishment of the new Community Safety and Wellbeing program took place during this reporting period and has already achieved many positive outcomes for Aboriginal families across the State. The enthusiasm of the team is infectious and has passed on to program participants, developing the skills they need to grow in confidence and knowledge as parents and caregivers.

As chairperson of the Secretariat of National Aboriginal and Islander Child Care (SNAICC), I was pleased to attend the SNAICC National Conference in Perth in September last year, with a number of AFSS Board members and staff.

Over 1,000 people attended this, the largest national gathering of people who work in Aboriginal and Torres Strait Islander child care, child protection and family support services from across Australia, where we were all able to “listen, learn and grow”.

AFSS’ Stronger Families teams across our regional and metropolitan areas were involved in the rollout of a new practice model called Solution Based Casework (SBC). May 2016 saw the culmination of months of hard work and training, with the presentation of Certificates of Competency to those who had attained certification in the program, by Dana Christensen, internationally recognised expert in the field of child welfare casework, and the main developer of SBC.

In June 2016 AFSS signed an historic partnership agreement with Anglicare, with the aim of strengthening our working relationships for the benefit of Aboriginal children and families in South Australia. We look forward to working together to enhance and increase capacity within the Child Protection and Out of Home Care sector.

Another major task undertaken this year has been the series of community consultations that the AFSS Gambling Help Service (AGHS) conducted in Port Augusta, Berri and Raukkan.

Feedback from the consultations – three separate events were held in each region – will be used to guide the future of the program to ensure that it meets community needs and expectations, and contribute to further enhancing AGHS. It is also intended that a 30 second spot will be produced and aired on NITV, using film footage from the events, that will focus on the issues of problem gambling in Aboriginal families and communities.

I take this opportunity to thank the many generous supporters of AFSS' children and young people, who have provided tickets to events, Christmas presents, equipment and funding for outings and special occasions.

I make particular mention here of Eoin Loftus. Eoin is the CEO of Majestic Hotels, and has for several years been raising funds to support children in AFSS care. His generosity and enthusiastic support of AFSS is second to none, and in August 2016 he is undertaking a run, four consecutive days of marathons across Kangaroo Island, to raise more money for this special fund.

Thank you Eoin, for your generosity of time and spirit in the voluntary work you undertake to ensure that children in AFSS' care take part in extra-curricular activities and opportunities that normally would be out of reach.

I also thank the AFSS Board for their continued support and counsel, to the AFSS Senior Management team for their leadership and hard work, to all our wonderful staff, and of course to our dedicated foster carers who so generously have welcomed Aboriginal children into their lives and hearts.

I look forward to the opportunities that the future will bring us all at AFSS as we strive to provide the best possible service to the Aboriginal children, youth, families and communities of South Australia in the years ahead.

Sharron Williams
Chief Executive Officer

Meet the Senior Management team



AFSS Senior Management team: Standing Peter Shattock, Senior Manager Corporate Services, Leata Clarke Senior Manager Regional Services. Seated: Kate Wright, Senior Manager Therapeutic Services, Warren Guppy Senior Manager Metropolitan Services.

Metropolitan Services

Aboriginal Gambling Help Service

AFSS Aboriginal Gambling Help Service (AGHS) is provided in Adelaide, Berri, Murray Bridge and Ceduna. The framework for delivery of the program is focused on building resilience, promoting connectedness and awareness, and education. The program incorporates six separate training modules that encompass all age ranges involved in the gambling arena, from the problem gambler, to family members affected by gambling and for community groups, to raise awareness.

In addition to formal presentations on a number of gambling matters, AFSS AGHS staff also provide minor case work for individuals and families impacted by gambling. A significant achievement in early 2016 was a series of community consultations made possible by additional funding from the Office of Problem Gambling. AFSS AGHS staff, led by Coordinator Tony Lawrence, embarked on an ambitious round of consultations with Aboriginal communities from the Riverland, Raukkan and Port Augusta.

Top right: Community members in Port Augusta shared with the AFSS team their thoughts and ideas on how we can best serve the community during the program's round of community consultations.

Bottom right: Bronte Warneke (AFSS CDW), Di Axford (Consumer Voice - RASA), Ann Lawrence (Senior Peer Worker - RASA) and Angela Roesler (CDW - Murray Bridge Community Centre) during the Murray Bridge Gambling Awareness week.





As part of Foster Carer Week celebrations, the Out of Home Care-Family Based Care team organised a smorgasbord lunch for our foster carers on 13 September 2015 at the Watermark Hotel in Glenelg in appreciation of the care, support and dedicated work they undertake in caring for Aboriginal foster children.

A series of three consultations with each of these communities was undertaken, with each consultation focusing on a different theme. The consultations were instrumental in hearing first-hand from many Aboriginal people about the impact of gambling on their communities. Outcomes and recommendations from the consultations have been forwarded to the Office for Problem Gambling for their consideration. At the time of writing, AFSS was required to re-tender for some components of the Aboriginal Gambling Help Service as part of a larger DCSI tendering process for specialised gambling help services across South Australia.

Out of Home Care – Family Based Foster Care

The recruitment, assessment and training of Aboriginal foster carers is the core business of AFSS' Metropolitan Family Based Care team. In addition, the ongoing support of our foster carer households requires three dedicated staff who assist carers to navigate the complexities associated with fostering children and young people. Currently, the number of Aboriginal children and young people under Guardianship of the Minister far exceeds the capacity of our current pool of Aboriginal carer households to accommodate. The demand for foster carers has remained as a key focus of the AFSS Metropolitan Out of Home Care team. The second full year of the AFSS Statewide Recruitment Strategy saw slightly higher numbers of foster carer enquiries, but in line with both national and international trends, the willingness of families to open their homes as foster carers is declining.

Out of Home Care - Residential Services

AFSS provides care for children and young people in three Residential Services located in the northern suburbs of Adelaide. Over the last 12 months, there has

been an increased focus on ensuring the home environment created in our services reflects a warm and nurturing environment while at the same time ensuring all children and young people who reside in the services are able to have access to cultural outings, activities and events that assist them in maintaining a strong connection to their culture.

Significant work has also focused on improving some of the processes and procedures highlighted through annual monitoring undertaken by staff from the Office of the Guardian and the DECD Licensing team. Working closely with the State Government's Licensing Unit, the Office of the Guardian and others, AFSS works to ensure that we comply with all relevant legislation and licensing requirements while at the same time, ensure that we are constantly up-skilling our staff to better manage the range of challenging behaviours and the effects of trauma on the children and young people who come into our service.

Winangay Resources

In late 2015 AFSS hosted the Winangay team from NSW to deliver a three-day workshop on the Winangay Aboriginal Foster Carer Assessment Tool. The Winangay Team (Aunty Sue Blacklock and Paula Hayden) visited Adelaide and delivered their Aboriginal Foster Care Assessment training in a first for South Australia. Participants included AFSS and Families SA staff as well as representatives from Anglicare, a.c.care, Centacare and Lutheran Community Care. While South Australia's Out of Home Care sector is required to use the Step by Step Foster Carer Training Assessment Tool, AFSS was keen to participate in training with the Aboriginal specific assessment tool as it reflects a more culturally



Father Christmas was a popular guest at the Metro foster families' Christmas get-together at Water World Aquatic Centre, Modbury.



AFSS Community Safety and Wellbeing team pulled out all the stops to ensure that AFSS was an active participant at Playford Alive. Facilitators Jasila Jebangir (left) and Eliza White staffed the AFSS information stall and ensured that there were plenty of balloons for the many children who were there.



appropriate way of working with Aboriginal people who want to become foster carers, while also maintaining a very rigorous and transparent process throughout the assessment. The Winangay Aboriginal Foster Carer Assessment Tool is culturally strong and robust generating evidence from a range of sources, and is competency based, child centred, trauma informed, collaborative in design and in the process, empowering and enabling. It focuses on existing skills and strengths and is orientated to the learning and development needs of prospective carers. It identifies areas of concern or challenges and provides opportunities for the carers and workers to identify strategies to meet those concerns and challenges, is user friendly for prospective carers and assessors and reflects best practice in the development of assessment tools. Following discussions with Families SA, AFSS was approved to run a 12-month trial of the Winangay Aboriginal Foster Carer Assessment Tool for the 2016-17 financial year.

Community Safety and Wellbeing

AFSS is very pleased with the take-up by young Aboriginal families across SA of the range of Community Safety and Wellbeing (CS&W) programs being offered. Initial community consultations (with over 100 community groups and organisations) resulted in wide acceptance of AFSS and the range of new CS&W programs on offer. The delivery of Community Safety and Wellbeing programs has been strongly supported by Aboriginal communities generally and also by Aboriginal Elders. In addition to CS&W flagship programs (Circle of Security-Parenting, Healthy Homes Resilient Families and Seasons for Healing), AFSS metropolitan based Facilitators also completed training in the Triple P Group Parenting Program, Solution Based Casework and Suicide Prevention. Due to the

Each year AFSS hosts the Elders' Pavilion at the NAIDOC Family Fun Day in Adelaide. It provides a great opportunity for community members to sit and have a yarn and a cuppa with friends.





demand for CS&W programs, waiting lists are now in place in most regions where the programs are delivered. AFSS often partners with other agencies where our role is to facilitate the program and when appropriate, provide catering, or the food where the program requires participants to increase their healthy food cooking skills on a tight budget. Our partners can often provide the venues and transport, and on some occasions child care, so that parents are free to fully participate. This has worked well in all areas and also continues to develop AFSS' partnerships and collaborative approaches to achieving positive outcomes for Aboriginal families and communities across South Australia.

YAATSISS

The overall aim of the National Affordable Housing Agreement (NAHA) Specialist Homeless Services

is to provide supported accommodation and related support services to help people who are homeless, or at imminent risk of homelessness, achieve the maximum possible degree of self-resilience and independence. Further, within this aim the goals are to resolve crisis, to re-establish family links and to re-establish a capacity to live independently of Specialist Homelessness Services. AFSS' Youth Accommodation Aboriginal and Torres Strait Islander Support Services (YAATSISS) provides in-centre and outreach support and case management to people staying in one of our accommodation services, Olga Fudge Lodge and Narungga House. YAATSISS is a short term emergency accommodation service for Aboriginal and Torres Strait Islander people from 15-25 years of age. A highlight of the year has been the ongoing support provided by the Zonta Club, part of a global organisation of women in business and the professions working together to advance



the status of women through service and advocacy. Zonta has donated various amounts of funding for playground equipment, art supplies, manchester and household goods which improve our service and what we can offer to our clients. Zontians volunteer their time, talents and support to fund raise for local and international service projects and scholarship programs aimed at fulfilling Zonta's mission and objectives. These projects make a difference to women's lives. Olga Fudge Lodge is in the process of setting up an art room where young people can experience art in all forms. Olga Fudge Lodge is also finalising a children's play area, again with the assistance of Zonta.

Urban Youth

The AFSS Urban Youth Service is delivered across the metropolitan region through a consortium partnership with Re-Engage Youth Services and

Uniting Care Wesley Port Adelaide. AFSS' role is to provide support to Aboriginal young people between the ages of 10-25 years who are at risk of emotional, social and/or physical harm. In particular the program focuses on Aboriginal young people who are, or were under the Guardianship of the Minister and who are experiencing multiple risk factors including: being at risk of homelessness or being homeless; at risk of being in contact with the Youth Justice system; developing behaviours that place them at risk or at risk of disengaging from school early. AFSS Urban Youth Service also offers group work and case management services in order to facilitate learning to increase social skills, enhance independence and develop core life skills.

AFSS Urban Youth Service is at capacity with a steady influx of referrals. AFSS Urban Youth workers are participating in community events, engaging in drop-in centres and participating in sports-led events involving their clients.



AFSS hosted the Winangay team at a three-day workshop convened at AFSS Head Office in Adelaide. Based in NSW the Winangay Team (Aunty Sue Blacklock and Paula Hayden) visited Adelaide and delivered their Aboriginal Foster Care Assessment Training. Pictured are, from left: Aunty Sue, Toni-Lee Miller and Paula.

Training and Development

It has been an extremely busy year for the AFSS Training Facilitator. Significant training was facilitated during the 2015-16 period. This included the coordination of training for eight new Community Safety and Wellbeing staff, with some training being delivered in-house while other training was coordinated through external providers (Circle of Security-Parenting, Triple P Parenting Program and Through Young Black Eyes). The period also saw refinements and the continual delivery of AFSS Residential Services Policy and Procedures training. A significant focus on Solution Based Casework (SBC) has yielded excellent results with AFSS now having two certified SBC Trainers, a significant number of Stronger Families staff being certified and the ability for AFSS to offer SBC training to staff from other NGOs. More general and ongoing training delivered to AFSS staff has included Child Safe Environments, Infant Safe Care, Hazardous Manual Tasks, Self Care, Trauma Informed Practice, and Seasons for Healing (Grief and Loss Education and Awareness), Maybo (Safer Physical Intervention) and a number of other AFSS-specific induction packages.

Finally, I wish to thank all the managers and teams that I have been working with over this past 12 months for their dedication and hard work. Our task is not an easy one, but with your ongoing commitment, I know that we will continue to make a positive difference in the lives of Aboriginal children and families in South Australia.

Warren Guppy
Senior Manager
Metropolitan Services

Regional Services

Out of Home Care – Family Based Foster Care

Ceduna, Coober Pedy, Port Augusta and Port Lincoln

During 2015-16 the AFSS Out of Home Care – Family Based Foster Care Recruitment Strategy was rolled out across South Australia. Promotional campaigns included radio, TV, print media, information stalls and open days. They all have successfully created awareness in the South Australian community about AFSS and the need for foster carers. There still remains the challenge of growing the number of foster carer households across AFSS regional sites.

Outside of the Adelaide metropolitan region, AFSS had 42 registered carers creating a diverse pool to draw upon for emergency care, respite care, short and long term care across South Australian regions. Carers are highly valued, so in appreciation our carers are entered into an annual draw to win a Shorts Holiday voucher to a location of their choice, and within each regional area, biannually a voucher for a Weekend Break is drawn.

A collaborative effort was made to finalise carer assessments and also to encourage more Aboriginal families to become carers using a new foster carers assessment tool, Winangay.

A highlight was the opportunity for some of our fantastic AFSS foster carers, supported by staff, to attend the International Foster Carer Conference held in Sydney, convened by the International Foster Carer Organisation (IFCO). It was an opportunity to network with other workers from 24 different countries. Other highlights included attendance at community events such as NAIDOC Week, Carers' Week and the Community Christmas Party.



In November 2015, AFSS Port Lincoln facilitated an Open Day at their office in Gloucester Terrace. Many carers came to show their support and a free Christmas raffle was on offer for all who attended. We received two carer enquiries on the day.

Out of Home Care – Non Family Based Care

Residential Care – Ceduna and Port Lincoln

AFSS successfully completed a Renewal of a Children's Residential Facility Licence in both Ceduna and Port Lincoln.

During 2015-16 children and young people in AFSS Residential Services often come with understandably high complex needs. They are supported by creating a safe, homely environment and are encouraged to establish routines, through attending the local school or tutoring, and to participate in regular sports activities such as football, basketball and netball. In addition, they participate in fun activities such as swimming at the beach and snorkelling, viewing the latest movies and educational computer games.

A focus is creating pride within them through participating in cultural community events such as NAIDOC Week; activities this year included the flag rising ceremony, cooking bush tucker, face painting and story-telling.

Emergency relief

AFSS continued to provide emergency relief to clients in Coober Pedy. AFSS' focus for emergency relief is provided through vouchers at the Miner's Store and IGA store, both of which allow the recipient to purchase food items only. With such a small allocation of emergency relief, AFSS was keen to ensure that any emergency relief funds were used to purchase food for households with children and young people.

*Jameila and Shanea
Haseldine leading the
2015 Ceduna NAIDOC
march.*



The Coober Pedy office has spent time working with clients around financial issues and developing partnerships with Centacare and Families SA. The partnerships help our clients to access local financial wellbeing counsellors who assist them to become self-reliant.

For the period 2015-16, a total of 129 people were provided with emergency relief and 20 per cent were referred to financial wellbeing counselling.

Integrated Youth Housing (Service to Youth Council)

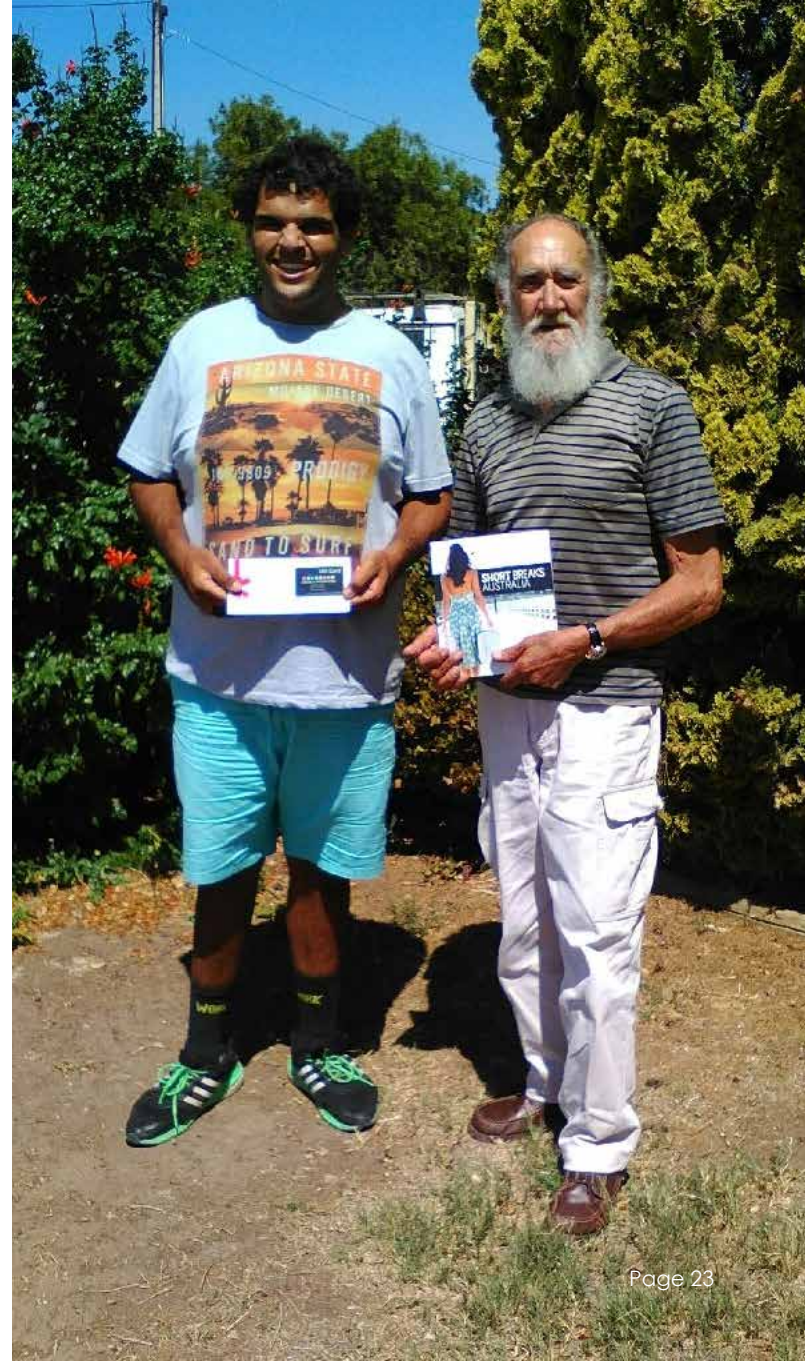
AFSS, in partnership with Service to Youth Council (SYC), re-signed a Memorandum of Understanding for 2016-17. AFSS provides casework support for up to four young Aboriginal people who are at risk of, or experiencing, homelessness and exiting juvenile detention in South Australia. Two independent living units in Port Augusta are made available to these young people and AFSS works closely with SYC in terms of supporting tenants for this program.

AFSS' role is to assist young people to set themselves up in accommodation including the purchasing of new furniture and appliances, which they take with them when they move on. Once the young people are set up, AFSS will provide casework services for up to 12 months to assist the young people in day-to-day support, referrals and advocacy.

Coober Pedy Youth Support

The purpose of the Youth Support program is to mentor young people, helping them to set goals, and strengthen protective factors by reconnecting participants with ongoing community activities and culture, therefore minimising the risk of engaging with the youth justice system.

AFSS values the amazing contribution of our dedicated foster carers. In recognition of their tireless work, an annual draw is being held for a \$500 SA Shorts Holiday voucher. The inaugural draw was won by Bob Welsh from Port Augusta, who is pictured with former foster son Sam Power.





Ish Gunasekara (AFSS Youth Officer), Frankie Wonga (modern dance participant), Mikey Roesch, Dylan Roesch and Matt Key (Media Studies teacher) were all involved in the Coober Pedy youth media initiative.

The Youth Support program had a slow start whilst recruiting for a Youth Support Worker, who started work in December 2016. The last six months have been extremely busy with the development of a Youth Advisory Committee and a number of joint projects.

During 2015-16, the program engaged 65 youths. A highlight has been the youth media initiative. The youth justice clients successfully developed short documentaries on culture, remote living as a youth and incorporating modern dance, in partnership with the Coober Pedy Area School. The modern dance documentary was showcased at the Drive In at “Black Screen”, sponsored by Country Arts SA and the National Film and Sound Archive Australia. Other activities included the development and maintenance of a Youth Community Garden with produce going to the Coober Pedy Area school canteen, a basketball program for health and wellbeing and building connectedness with other social groups. The youth have been able to positively give back to the community.

Thank you to our valued partners, the District Council of Coober Pedy, Youth Justice, Coober Pedy Area School and Red Cross, for their support.

AFSS office relocations

In closing, I am pleased to report that our Coober Pedy office relocated this year (see story at right) and staff from the Port Augusta office are expected to relocate to new AFSS premises on Victoria Parade – with street appeal!

The newly refurbished office has greater access for our clients with off street parking. Staff are looking forward to settling into the new premises in the near future.

Leata Clarke
Senior Manager
Regional Services



AFSS Coober Pedy has moved to permanent premises in Aylett Street. The new building has been greeted with enthusiasm by staff, agencies and clients alike. It provides first-rate facilities, enhancing the excellent service delivery that AFSS provides to Aboriginal people in the region.



AFSS team members receive their Accreditation certificates for Solution Based Casework. Pictured, back row from left: Amber Shannon (Case Worker, Ceduna); Helen Dunn (Case Manager, Ceduna); Dana Christensen (Solution Based Casework Developer); Wendy Wicks (Solution Based Casework Coach), Michelle Brooks (Case Worker, Port Lincoln); Glenys Nowak (Case Manager, Port Lincoln); Rebecca Starrs (Families SA). Front row, from left: Tania Elliott (SBC Trainer); Natalie Ross (Case Worker, Ceduna); Rebecca Vincent (Case Worker, Ceduna).

Therapeutic Services

This has been a year of growth, development and change in the Therapeutic Services team.

One of the great achievements for this year has been the successful certification of two of our Stronger Families teams in Solution Based Casework (SBC). This represents a huge accomplishment for AFSS as the first NGO in South Australia to have certified staff.

The Gazetted team, funded during the latter part of last year to allow expansion in the program, has now been fully staffed. We have a coordinator and consultant based in our Adelaide office and a second consultant based at our Port Augusta office.

I joined the team in May as Senior Manager following the departure of Tracey Everingham in February. I have spent the last couple of months of this year visiting the regions and getting to know the staff and program. I am really excited by the opportunity to work alongside the dedicated and skilled staff to continue to grow and develop Therapeutic Services at AFSS.

Stronger Families

AFSS Stronger Families Program is based on the belief and determination that children need to be cared for safely and in a manner that provides them an opportunity to thrive. In order for Aboriginal children to thrive we believe they need to be supported to maintain their connection to family, kin group, culture, language and land. The Stronger Families programs work to support this connection.

Stronger Families works alongside families, Families SA and other service providers to empower families to succeed. The purpose of this program is to work alongside families that have had contact with the child protection system and support them to develop the skills, resilience and networks to allow them to keep their children in their care, or work to have them returned to the family. The Stronger Families programs include Targeted Intervention, Reunification and Family Preservation services.

AFSS has Stronger Families services in the Adelaide metropolitan area, Ceduna, Port Lincoln, Port Augusta, Coober Pedy and Berri.



July 2015 saw the first collaborative playgroup between Renmark Children's Centre and the AFSS Stronger Families program. Here we see little playgroup members enjoying some time on the play mat.

SBC is the case management framework being used across the child protection sector in the state, and AFSS has committed a significant amount of resources to making the transition to this framework. All of our other teams are now vying to be the next certified team following the successful certification of our Ceduna and Port Lincoln teams.

The certification of this first cohort of staff was celebrated with some of our partners from Families SA and the Model Developer Dana Christensen and his wife Natalie Bowlds, the Director of Operations and Special Projects, Solutions Based Casework Training and Consultation.

Regional reports

Berri

Stronger Families Riverland has had some changes in staff during 2015-2016 period; the office has a total of three staff and all are Aboriginal/Torres Strait Islander, two of whom work in the Stronger Families program. Having an all Aboriginal/torres Strait Islander team is quite enriching as community members drop in to chat and help themselves to the AFSS newsletter and other information on display. In addition the Riverland is the only region that has a male case worker, creating a balance for the community and enriching our Stronger Families program.

The Riverland provides a Targeted Intervention Service only to the community; that means we are building and strengthening Aboriginal families who need extra support with managing challenges. We work to assist families to create a safer environment for their children.

Our partnership with Riverland Families SA is very good and we were able to build and connect with Families SA staff immediately, and since the SBC training for Families SA Riverland region, Stronger Families has noticed a change in our

working relationship. The Stronger Families team meets with Families SA on a monthly basis to report and discuss our client families' progress and challenges.

Ceduna

Ceduna Stronger Families has had three workers certified in SBC. While it was a challenge to us all we have mastered it. Case workers have worked consistently and have been committed this year to learning the new model and integrating it into our work practice with families. Our case workers are always ready to build on their skills and learn new ways of doing our work.

Ceduna Stronger Families team continues to enjoy celebrating achievements with families. It is always a fun time where we come together enjoy food, take photos, and a gift is given to the family.

Case workers make regular trips to the Yalata and Koonibba communities to work with clients. The team has worked closely with other services and the community to allow us to develop strong and positive relationships.

Stronger Families has a great working relationship with Families SA and networks in Ceduna, Koonibba and Yalata. Regular partnership meetings and weekly all agency meetings have assisted in good communication and positive outcomes for clients.

Coober Pedy

Stronger Families, Coober Pedy has had a change in staff, employing a new Case Manager and Case Worker during the 2015-2016 period. The team has been busy working with full caseloads since the start of 2016 and is enjoying assisting families to meet their goals using SBC.

Through the SBC process the team has noted that families are able to naturally identify barriers that have caused their family to be involved in the child protection system and are able to identify their strengths to start working out what they need to do to get out of the child protection system.

Through developing strong working relationships and using SBC, we have seen new engagement from clients who have been in and out of the child protection system for the past decade engage, accept challenges they



*Coober Pedy children celebrate
Children's Day*

face as a family and move through to show long term meaningful change. Through the support of the Case Worker, the team has seen the success of a client participate in Circle of Security and be able to see where she was not meeting some of her children's needs and articulate to other people/services what she needs to do to change this.

As a new team, Coober Pedy Stronger Families has been busy developing partnerships with Families SA, the wider community and laying the foundations for family engagement. The team has been developing strategies in order to adapt to the fly-in/fly-out model which Families SA has developed to service this region, to ensure that clients receive a consistent, timely response.

With a productive end to the 2015-2016 period the Coober Pedy team looks forward to becoming certified in SBC and to continue to support our clients in the coming year.

Metropolitan Adelaide

The Stronger Families Metro team has had a few changes in the staffing area since the last Annual Report with the employment of a new Case Worker at the end of 2015 and a new Case Manager in March 2016. The Metro team is currently working at capacity

with their caseloads being between five to seven clients each, and for the first time there is a waiting list which was introduced in May-June of this year.

This waiting list also proves that there are Aboriginal families in the community who are keen to engage with the Stronger Families program to get the support and assistance through Family Preservation or Reunification in a more culturally safe and supportive environment.

The SBC model is coming along well and with this in mind, there has been some positive movement forward by including the families and having the hard conversations with them around recognising the situations they are currently in and why Families SA are involved in their lives.

The Metro team continues to work and build strong relationships with not only the families, but also service providers, whom we work alongside and in partnership with, to ensure positive outcomes for our families.

There has been a number of clients who have gone on to successfully complete workshops/training such as Domestic Violence workshops and Circle of Security Programs as well as participating in other workshops and groups that the AFSS Community Safety and Wellbeing program has provided.

With the staff changes that have occurred in recent months the Metro team is settling well and looks forward to having a positive and fruitful second half of 2016.

Port Augusta

Port Augusta AFSS Stronger Families staff have remained constant this financial year and have worked consistently within the SBC framework. For the most part, Port Augusta Stronger Families team has operated at full capacity regarding client case load and, at times, has had a waiting list.

AFSS negotiated with Uniting Care Wesley for them to run programs for AFSS clients and these included Seasons for Healing and LIFE (Let Information Feed Empowerment). An AFSS staff member also co-facilitated a Through Black Eyes Cultural camp early this financial year, held in Nepabunna for clients from other agencies, as well as AFSS. Other clients have completed courses such as Circle of Security and Healthy Homes with the relatively newly formed Community Safety & Wellbeing program, which is based at Port Augusta AFSS.

Port Lincoln

The Port Lincoln team is proud to be one of the two teams certified in SBC. In Port Lincoln we enjoy an extremely good relationship with service providers and work with agencies such as: Port Lincoln Aboriginal Health Services, West Coast Youth and Community Services, Department of Mental Health, CAHMS, local Drug and Alcohol services, Housing SA, Yarredi (family violence), Salvation Army, Uniting Care Wesley, Centacare, Families SA, Pt Lincoln schools (pre-school, Primary, High School) Dept of Correctional Services, Centrelink, Port Lincoln Police and many others. The Case Manager also attends a number of regular service provider meetings such as the Family Safety Framework meetings and Stronger Families Partnership meetings.



The Seasons for Healing program has had some great outcomes in Port Augusta. Pictured from left are: Anne Rosewarne, Tahnee Nielsen, Leonie Wilson, Linda Brady and Denise Wilton. Leonie and Denise are Case Workers in the AFSS Stronger Families team.

We have had a busy year with clients who are dealing with a variety of issues which have included family violence, drug/alcohol use and mental health. This has often made our work very challenging, and highlighted the importance of our SBC skills and strong relationships with our partner agencies.

Both members of the Port Lincoln team have also successfully completed some online training through the Dulwich Centre, Externalizing Conversations and Re-Membering; this has further developed the skills and knowledge within the team.

Gazetted Service

The Gazetted Service provides cultural responses for Child Protection court applications where they relate to an Aboriginal child, and attend all Family Care meetings to provide cultural consultancy for Aboriginal Children. AFSS has the only funded service in South Australia, and as such is required to respond to all applications.

AFSS was successful in securing funding to advertise and recruit a Coordinator for the Cultural Consultancy program and a further Cultural Consultant to be based in Port Augusta and provide a service to the northern and western region of South Australia.

During July, AFSS' long standing Cultural Consultant Leila Plush left her role with AFSS.

In September AFSS employed a new Coordinator followed by a new Cultural Consultant based in Adelaide in December 2015. A new Cultural Consultant was also employed at the Port Augusta office servicing the regional areas of South Australia.

The Cultural Consultants provide written cultural responses to all Families SA Care and Protection applications before the Youth Court of South Australia and attend all Family Care meetings as a Cultural Representative within South Australia regarding Aboriginal children who have come to the attention of the Child Protection Services in South Australia.

The program is enhanced through relationships with the Care and Protection Unit, Youth Court of South Australia, Families SA's Principal Aboriginal Consultants and Aboriginal and non-Aboriginal Out of Home Care service providers.

Data

From 01 July 2015 - 30 June 2016, the Cultural Consultancy program responded to 270 Care and Protection applications and attended 109 Family Care meetings involving a total of 723 Aboriginal and Torres Strait Islander children.

Kate Wright
Senior Manager
Therapeutic Services



AFSS has designed a series of posters for use with SBC.

They will be used as tip sheets to support AFSS' work with Aboriginal families. The posters are bright, engaging and culturally appropriate, and will help families remember important messages about their roles and responsibilities in keeping their children safe.



Corporate Services team members undertook studies to enhance their professional development. Proudly displaying their certificates are from left: Lynette Lemm, Amy Van Buskirk, Kim Appelby, Helen Laxton, Terri Cekic and Lizzie Wright.

Corporate Services

Corporate Services incorporates the following areas:

- ☐ Administrative Support
- ☐ Human Resources
- ☐ Accounts Payable/Receivable
- ☐ Payroll
- ☐ Information Technology (IT)
- ☐ Finance and Reporting
- ☐ Records Management
- ☐ Property and Infrastructure

The 2015-16 year has been another busy 12 months for our team. In June we welcomed Rebecca Ma who joined us as Accounts Officer, to work beside our Accounts Officer Terri Cekic.

Terri has been with AFSS for more than five years and has commenced a well-earned transition to retirement by dropping back to working two days per week.

During the year, we were successful in finding and acquiring a new property for our base in Port Augusta.

The new site at Victoria Parade required some modifications which were arranged with local contractors, ready for occupancy in July 2016.

Our main office at Waymouth Street was in need of some love, and painting of the interior and recarpeting was undertaken, which has given the environment a fresher look.

Another significant project undertaken during the year was the upgrade of the motor vehicle fleet, which had become aged.

Some 30+ vehicles were leased to replace the owned vehicles across the entire state, which was no mean feat in itself but was handled seamlessly in conjunction with the supplier.

One of our major funding bodies, the SA Government's Department for Education and Child Development, commenced a review of all contracts during the year that will see them move to a Unit Costing and Outcomes-based approach and we have been contributing to the consultations around this process.

We worked with our solicitor to put together an Exemption Application to the Australian Government to enable AFSS to be incorporated under the *Corporations Act 2001 (Cth)*. This was granted and work is progressing on that process.

Expressions of Interest were submitted and subsequently accepted by the South Australian Government to establish additional Residential Care Services. The coming 12 months will see a great deal of activity in the Corporate Services area to support the establishment process.

I wish to thank the team, which has continued to deliver a diverse range of support services and ensured that all areas of the organisation have the assistance, advice, input and support needed by AFSS staff.

*Peter Shattock
Senior Manager
Corporate Services*



AFSS' Ceduna office celebrated National Aboriginal and Torres Strait Islander Children's Day with the community, at the Ngura Yadurirn Children and Family Centre. As well as toys and play areas, there were plenty of fun activities for the kids. Katharine Micka and Michelle Naylon prepared a fantastic AFSS information display with lots of giveaways for the children and families who attended the celebrations.



AFSS Financial Statements for the year ended 30 June 2016

The following pages provide an abridged version of the
Financial Statements

The full report is available from
AFSS upon request

ABORIGINAL FAMILY SUPPORT SERVICES INCORPORATED

**STATEMENT OF PROFIT OR LOSS AND OTHER COMPREHENSIVE INCOME
FOR THE YEAR ENDED 30 JUNE 2016**

	Note	2016 \$	2015 \$
Revenue			
Grant revenue	2	11,108,842	10,107,667
Other revenues	2	171,817	425,304
Net Gain on Disposal of Non Current Assets	4	169,766	11,917
Employee benefits expenses		(9,168,137)	(8,530,557)
Goods and Services expenses	3	(2,016,389)	(1,693,909)
Depreciation and amortisation expenses	8	(225,375)	(272,079)
Current year surplus (deficit) before income tax		<u>40,525</u>	<u>48,341</u>
Income tax expense		-	-
Current year surplus (deficit) for the year		<u>40,525</u>	<u>48,341</u>
Other comprehensive income			
Fair value gains on revaluation of land & buildings		833,268	-
Other comprehensive income for the year		<u>833,268</u>	<u>-</u>
Total comprehensive income for the year		<u>873,793</u>	<u>48,341</u>
Total comprehensive income attributable to members of the equity		<u>873,793</u>	<u>48,341</u>

The accompanying notes form part of these financial statements

ABORIGINAL FAMILY SUPPORT SERVICES INCORPORATED

**STATEMENT OF FINANCIAL POSITION
FOR THE YEAR ENDED 30 JUNE 2016**

	Note	2016 \$	2015 \$
CURRENT ASSETS			
Cash and Cash Equivalents	5	3,223,410	2,916,560
Accounts Receivable and Other Debtors	6	11,451	263,273
Other Current Assets	7	-	8,293
TOTAL CURRENT ASSETS		<u>3,234,861</u>	<u>3,188,125</u>
NON-CURRENT ASSETS			
Property, Plant and equipment	8	3,234,598	2,289,522
TOTAL NON-CURRENT ASSETS		<u>3,234,598</u>	<u>2,289,522</u>
TOTAL ASSETS		<u>6,469,459</u>	<u>5,477,647</u>
CURRENT LIABILITIES			
Accounts Payable and Other Payables	9	2,602,751	2,548,564
Employee Provisions	10	554,204	432,483
TOTAL CURRENT LIABILITIES		<u>3,156,956</u>	<u>3,081,047</u>
NON-CURRENT LIABILITIES			
Employee Provisions	10	260,449	218,340
TOTAL NON-CURRENT LIABILITIES		<u>260,449</u>	<u>218,340</u>
TOTAL LIABILITIES		<u>3,417,405</u>	<u>3,299,387</u>
NET ASSETS		<u>3,052,054</u>	<u>2,178,261</u>
EQUITY			
Retained Surpluses		1,549,248	1,508,723
Asset Revaluation Reserve		1,402,806	569,538
TOTAL EQUITY		<u>3,052,054</u>	<u>2,178,261</u>

The accompanying notes form part of these financial statements

ABORIGINAL FAMILY SUPPORT SERVICES INCORPORATED

STATEMENT OF CHANGES IN EQUITY
FOR THE YEAR ENDED 30 JUNE 2016

	Retained Surpluses	Asset Revaluation Reserve	Total
	\$	\$	\$
Balance at 1 July 2014	1,560,381	569,538	2,129,919
Net surplus (deficit) for the year	48,341	-	48,341
Other comprehensive income for the year	-	-	-
Total comprehensive income attributable to members of the equity for the year	48,341	0	48,341
Movement in Reserve		0	-
Balance at 30 June 2015	1,608,723	569,538	2,178,261
Balance at 1 July 2015	1,608,723	569,538	2,178,261
Comprehensive income			
Net surplus (deficit) for the year	40,525		40,525
Other comprehensive income for the year		833,268	833,268
Total comprehensive income attributable to members of the equity for the year	40,525	-	873,793
Balance at 30 June 2016	1,649,248	1,402,806	3,052,054

The accompanying notes form part of these financial statements

ABORIGINAL FAMILY SUPPORT SERVICES INCORPORATED

STATEMENT OF CASH FLOWS
FOR THE YEAR ENDED 30 JUNE 2016

	Note	2016 \$	2015 \$
CASH FLOW FROM OPERATING ACTIVITIES			
Cash receipts in the course of operations		11,368,090	10,175,252
Cash payments in the course of operations		(10,983,058)	(9,874,343)
Interest received		89,258	102,622
Net cash provided by/(used in) operating activities		474,289	403,531
CASH FLOW FROM INVESTING ACTIVITIES			
Payments for plant and equipment		(412,339)	(331,597)
Receipts from disposal of plant and equipment		244,900	12,923
Net cash used in investing activities		(167,439)	(318,674)
CASH FLOWS FROM FINANCING ACTIVITIES			
Repayment of Borrowings		-	-
Net cash provided by/(used in) financing activities		-	-
NET INCREASE/(DECREASE) IN CASH HELD		306,850	84,857
Cash at the beginning of the financial year		2,916,560	2,831,703
CASH AND CASH EQUIVALENTS AT THE END OF THE FINANCIAL YEAR	5	3,223,410	2,916,560

The accompanying notes form part of these financial statements



AFSS foster carer, Jackie Townsend, was the deserving winner of the raffle held at the Port Lincoln Family Based Care Open Day.

Joanne Sansbury proudly displays her certificates gained through her participation in Community Safety and Wellbeing at Port Lincoln.



ABORIGINAL FAMILY SUPPORT SERVICES INCORPORATED

STATEMENT BY MEMBERS OF THE COMMITTEE

In the opinion of the committee the financial report as set out on pages 1 to 16:

- 1 Presents a true and fair view of the financial position of the Aboriginal Family Support Services Incorporated as at 30 June 2016 and its performance for the year ended on that date in accordance with Australian Accounting Standards - Reduced Disclosure Requirements (including Australian Accounting Interpretations) and the Associations Incorporation Act 1985.
- 2 At the date of this statement, there are reasonable grounds to believe that Aboriginal Family Support Services Incorporated will be able to pay its debts as and when they fall due.

This statement is made in accordance with a resolution of the committee and is signed for and on behalf of the committee by:


Committee Member


Committee Member

Dated this 23rd day of September 2016

INDEPENDENT AUDITOR'S REPORT TO THE MEMBERS OF
ABORIGINAL FAMILY SUPPORT SERVICES INCORPORATED

Report on the Financial Report

We have audited the accompanying financial report of Aboriginal Family Support Services Incorporated (the association), which comprises the statement of financial position as at 30 June 2016, the statement of profit or loss and other comprehensive income, statement of changes in equity and statement of cash flows for the year then ended, notes comprising a summary of significant accounting policies and other explanatory information, and the statement by the members of the committee.

Committee's Responsibility for the Financial Report

The committee of the association is responsible for the preparation of the financial report that gives a true and fair view in accordance with Australian Accounting Standards – Reduced Disclosure Requirements, the Australian Charities and Not-for-profits Commission Act 2012 and the Associations Incorporation Act 1985 and for such internal control as the committee determines is necessary to enable the preparation of the financial report that is free from material misstatement, whether due to fraud or error.

Auditor's Responsibility

Our responsibility is to express an opinion on the financial report based on our audit. We conducted our audit in accordance with Australian Auditing Standards. Those standards require that we comply with relevant ethical requirements relating to audit engagements and plan and perform the audit to obtain reasonable assurance whether the financial report is free from material misstatement.

An audit involves performing procedures to obtain audit evidence about the amounts and disclosures in the financial report. The procedures selected depend on the auditor's judgment, including the assessment of the risks of material misstatement of the financial report, whether due to fraud or error. In making those risk assessments, the auditor considers internal control relevant to the association's preparation of the financial report that gives a true and fair view in order to design audit procedures that are appropriate in the circumstances, but not for the purpose of expressing an opinion on the effectiveness of the association's internal control.

An audit also includes evaluating the appropriateness of accounting policies used and the reasonableness of accounting estimates made by the committee as well as evaluating the overall presentation of the financial report.

We believe that the audit evidence we have obtained is sufficient and appropriate to provide a basis for our audit opinion.

INDEPENDENT AUDITOR'S REPORT TO THE MEMBERS OF
ABORIGINAL FAMILY SUPPORT SERVICES INCORPORATED

Independence

In conducting our audit, we have complied with the independence requirements of Australian professional ethical pronouncements.

Auditor's Opinion

In our opinion, the financial report of Aboriginal Family Support Services Incorporated is in accordance with the Australian Charities and Not-for-profits Commission Act 2012 and the Associations Incorporation Act 1985 including:

- i. giving a true and fair view of the association's financial position as at 30 June 2016 and of its performance for the year ended on that date; and
- ii. complying with Australian Accounting Standards - Reduced Disclosure Requirements as described in Note 1, Division 60 of the Australian Charities and Not-for-profits Commission Regulation 2013 and the Associations Incorporation Act 1985



Trevor Basso - Partner
Basso Newman & Co
Chartered Accountants
Adelaide

Dated this 7th day of October 2016

basso
& newman
chartered
accountants

ABORIGINAL FAMILY SUPPORT SERVICES INCORPORATED

COMPILATION REPORT
TO ABORIGINAL FAMILY SUPPORT SERVICES INCORPORATED

Scope

We have compiled the accompanying special purpose financial statement of Aboriginal Family Support Services Incorporated which comprises the Income and Expenditure Statement.

The specific purpose for which the special purpose financial statement has been prepared is to provide information relating to the performance of the entity that satisfies the information needs of the committee.

The Responsibility of the Committee for the financial report

The committee is solely responsible for the information contained in the special purpose financial statement and has determined that the basis of accounting is appropriate to meet their needs and for the purpose that the financial statement was prepared.

Our responsibility

On the basis of information provided by the committee we have compiled the accompanying special purpose financial statement in accordance with the basis of accounting adopted and APES 315: Compilation of Financial Information.

Our procedures used accounting expertise to collect, classify and summarise the financial information, which the committee provided, into compiling the financial statement. Our procedures do not include verification or validation procedures. No audit or review has been performed and accordingly no assurance is expressed.

The special purpose financial report was compiled exclusively for the benefit of the committee. We do not accept responsibility to any other person for the contents of the special purpose financial statement.



T A Basso - Partner
Basso Newman & Co
Chartered Accountants
Adelaide
7th October 2016

basso
& newman
chartered
accountants



Where to find us

Adelaide 134 Waymouth Street Adelaide SA 5000 Phone: (08) 8205 1500	Murray Bridge C/- ALRM Inc, 27 Beatty Terrace Murray Bridge SA 5254 Phone: 0418 499 649
Berri 23 Denny Street Berri SA 5343 Phone: (08) 8582 3192	Port Augusta 8-10 Victoria Parade Port Augusta SA 5700 Phone: (08) 8641 0907
Ceduna 28 Poynton Street Ceduna SA 5690 Phone: (08) 8625 3466	Port Lincoln 3 Gloucester Terrace Port Lincoln SA 5606 Phone: (08) 8683 1909
Cooper Pedy Lot 1991 Aylett Street Cooper Pedy SA 5723 Phone: (08) 8672 3066	Smithfield 39a Anderson Walk Smithfield SA 5114 Phone: (08) 8254 1077

